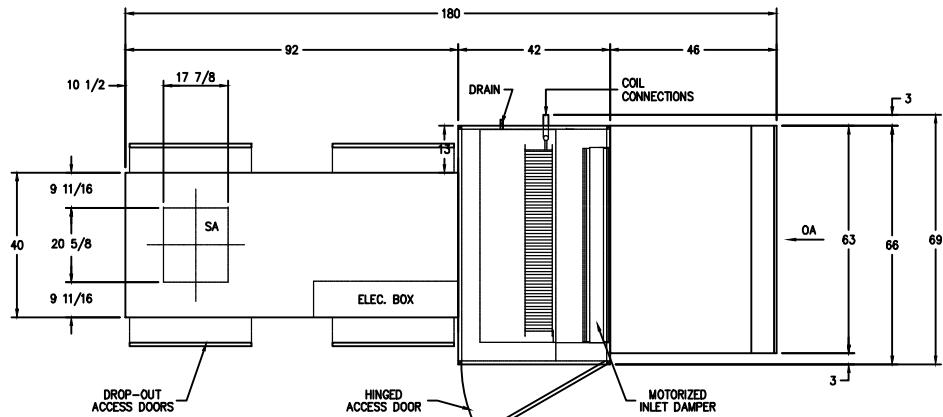
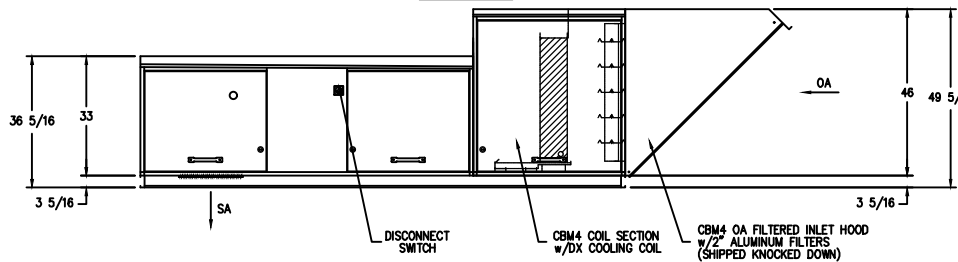


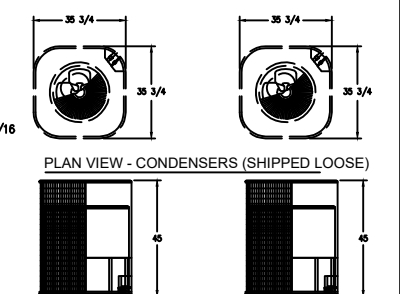
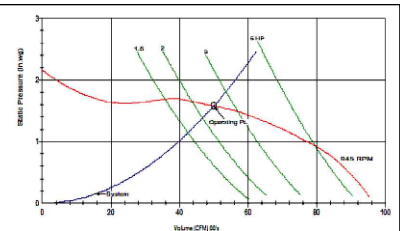
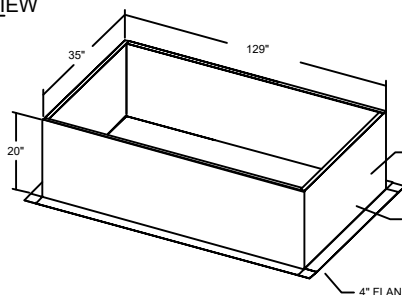
UNIT DESCRIPTION	
MODEL #	T3-DX
WEIGHT	1045 lb
DISCHARGE DIRECTION	DOWN
AIRFLOW (CFM)	5000
EXTERNAL SP	.25
TOTAL SP	1.58
FAN BHP	2.3
FAN RPM	945
MOTOR HP	3 HP
HEATING TYPE	DIRECT GAS FIRED
FUEL TYPE	NATURAL GAS
INPUT (MBH)	440
OUTPUT (MBH)	405
POWER SUPPLY	208/1/60
FLA (AMPS)	21.7
MCA (AMPS)	26.4
MOP (AMPS)	45
SELECTION DATA	
AIRFLOW	5000 CFM
ELEVATION	1033 FT
ENTERING DB/WB	93.9°F / 74.8°F
REQ'D LEAVING AIR DB/WB	0°F / 0°F
REQ'D CAPACITY	120 MBH
COILS PER BANK	1
FIN TYPE	5/8" x 1.5" x 1.299" WAFLE
FIN HEIGHT	33"
FIN LENGTH	50"
FIN MATERIAL	ALUMINUM .006 in.
TUBE MATERIAL	COPPER 0.020 in.
REFRIGERANT	R454b
LIQUID TEMP	110°F
EVAP. TEMP	61°F
LEAVING SUPERHEAT	5°F
COIL CIRCUITING	INTERLACE 2 CIRCUIT
COIL HAND	RIGHT HAND
CASING MATERIAL	16 ga. GALVANIZED
CONNECTION MATERIAL	COPPER
CONNECTION TYPE	SWT
COIL COATING	NONE
PERFORMANCE DATA	
MODEL	DXC03C11-33.00 X 50.00R
ROWS/FBI	3 / 12.0
TOTAL CAPACITY	129.1 MBH
SENSIBLE CAPACITY	119.0 MBH
LEAVING AIR DB/WB	72.4°F / 68.3°F
FACE VELOCITY	436.36 FPM
REFRIGERANT CHARGE	6.30 lbs
AIR PRESSURE DROP	0.13" WC
REFRIGERANT PRESSURE DROP	8.10 PSI
TOTAL FEEDS	4 FEEDS
TUBE VAPOR VELOCITY	1873 FPM
SUCTION CONNECTION	1.125"
SUCTION LINE VELOCITY	1398 FPM
DISTRIBUTOR #1	501-2-1/4-3
DISTRIBUTOR #2	501-3-1/4-3
HOT GAS BYPASS CONNECTION	(1) PER DISTRIBUTOR
DRY WEIGHT	112.4 lbs.



PLAN VIEW



CONTROLS SIDE VIEW



(1) 5-TON CONDENSER #1: APPROX. 286 LBS. (1) 5-TON CONDENSER #2: APPROX. 286 LBS.

"IT IS THE RESPONSIBILITY OF THE ARCHITECT/OWNER TO ENSURE THAT THE HOOD IS CLEARANCE FROM LIMITED-COMBUSTIBLE MATERIALS IN COMPLIANCE WITH LOCAL CODE REQUIREMENTS."

"ALL EQUIPMENT IS UL LISTED COMPONENTS. NAKS HOODS ARE BUILT IN COMPLIANCE WITH: NFPA 96-6 (UL710) AND ARE RECOGNIZED BY ONE OR MORE OF THE FOLLOWING - NSF INTERNATIONAL -UL -OPENINGS ARE RECOMMENDED SIZES, DUCT OPENINGS TO BE CUT AND DUCTS INSTALLED IN FIELD"

NSF LISTED

UL LISTED

REVISIONS

NO.	DATE	DESCRIPTION

NORTH AMERICAN
HEATING & AIR CONDITIONING SOLUTIONS

172 BEAVER CREEK 1704 E. 17th 1-800-864-6307
STURBA, OH 44224 STURBA, OH 44224 FAX 440-381-2700

EQUIPMENT SCHEDULE

CONTRACT NO. - ITEM NO. -
LOC. -
DATE -
DWG# - SHEET - OF -

FAN UNIT NO.	FAN UNIT MODEL #	EXHAUST FAN									SUPPLY FAN									
		MODEL	TAG	CFM	S.P.	RPM	H.P.	Ø	VOLT	FLA	BLOWER	HOUSING	TAG	CFM	S.P.	RPM	H.P.	Ø	VOLT	FLA
-	T3-DX SF-1	-	-	-	-	-	-	-	-	-	-	T3-DX	SF-1	5000	0.25	945	3.0	1	230	-