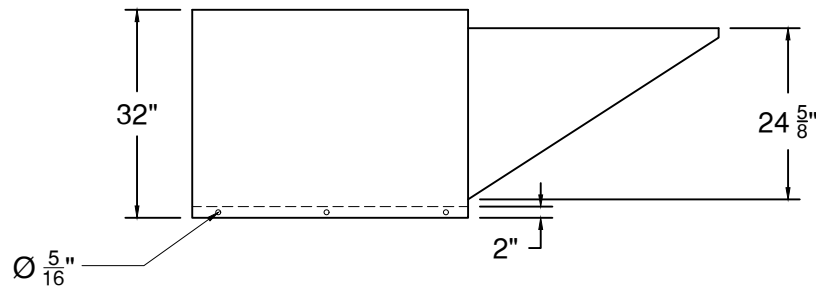
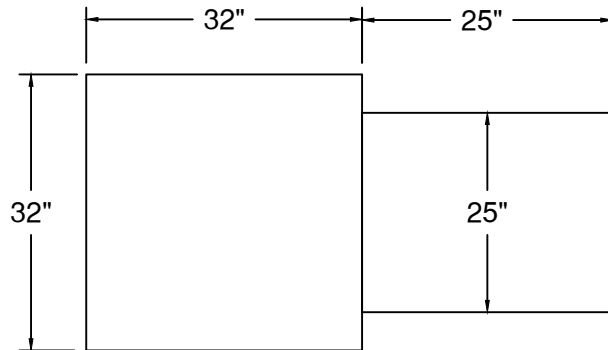


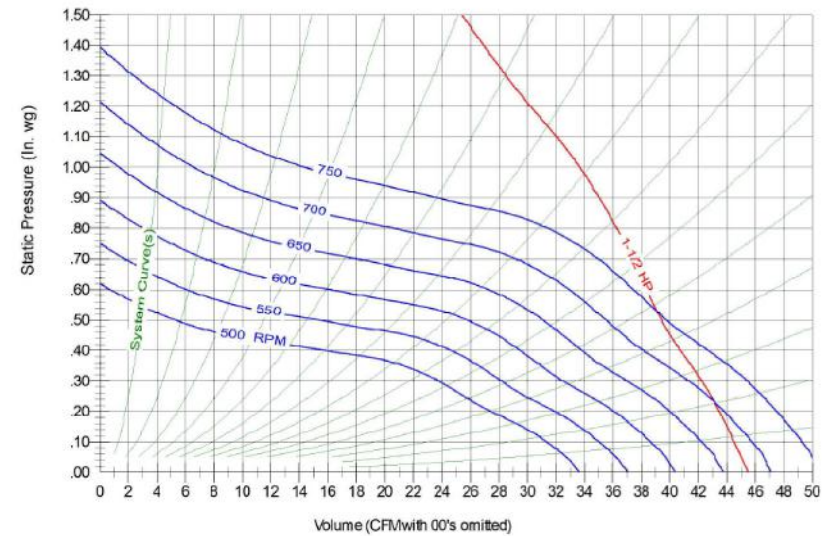
PERFORMANCE DATA

MODEL # SF10

UL705 FRESH AIR SUPPLY FAN BELT



DIMENSIONAL DATA
31 1/2" SQ. CURB



PHASE	1	VOLTS	115/230
AMPS	20/10	HP	1 1/2

RPM	0"		.125"		.250"		.375"		.5"		.750"		1"	
	CFM	SONE	CFM	SONE	CFM	SONE	CFM	SONE	CFM	SONE	CFM	SONE	CFM	SONE
558	3792	14	3500	12.8	3058	11.5	2670	10.3	1762	9.1				
592	4023	15.5	3750	14.3	3371	13.1	2974	11.9	2439	10.5				
626	4235	16.9	4000	15.8	3672	14.7	3269	13.5	2860	12.1	843	10.5		
640	4355	17.7	4100	16.5	3792	15.4	3365	14.2	3017	12.9	1092	11.3		

STANDARD FEATURES

- FLEXIBLE FORWARD CURVED BELT DRIVE BLOWERS
- OPERATE AT LOW SPEED AND LOW NOISE LEVELS
- GALVANIZED STEEL HOUSING
- HEAVY DUTY BALL BEARINGS SUITABLE FOR -65° TO +250° F
- WEATHER PROOF CABINET DESIGNED FOR OUTDOOR ROOF MOUNTING
- FILTERS DESIGNED WITH LARGE SURFACE AREA FOR EFFICIENT FILTRATION
- WASHABLE ALUMINUM MESH FILTER ARE LOCATED IN THE INTAKE HOOD AND ARE ACCESSIBLE THROUGH THE HOOD END CAP FOR EASE OF SERVICE
- EASY ON-SITE ADDITION OF CUSTOMER SUPPLIED AIR SUPPLY DUCT EXTENSION BETWEEN THE INTAKE HOOD AND UNIT PROVIDES ADDITIONAL SEPARATION WHERE NECESSARY
- AVERAGE UNIT WEIGHT: 180 LBS
- AVERAGE SHIPPING WEIGHT: 240 LBS

