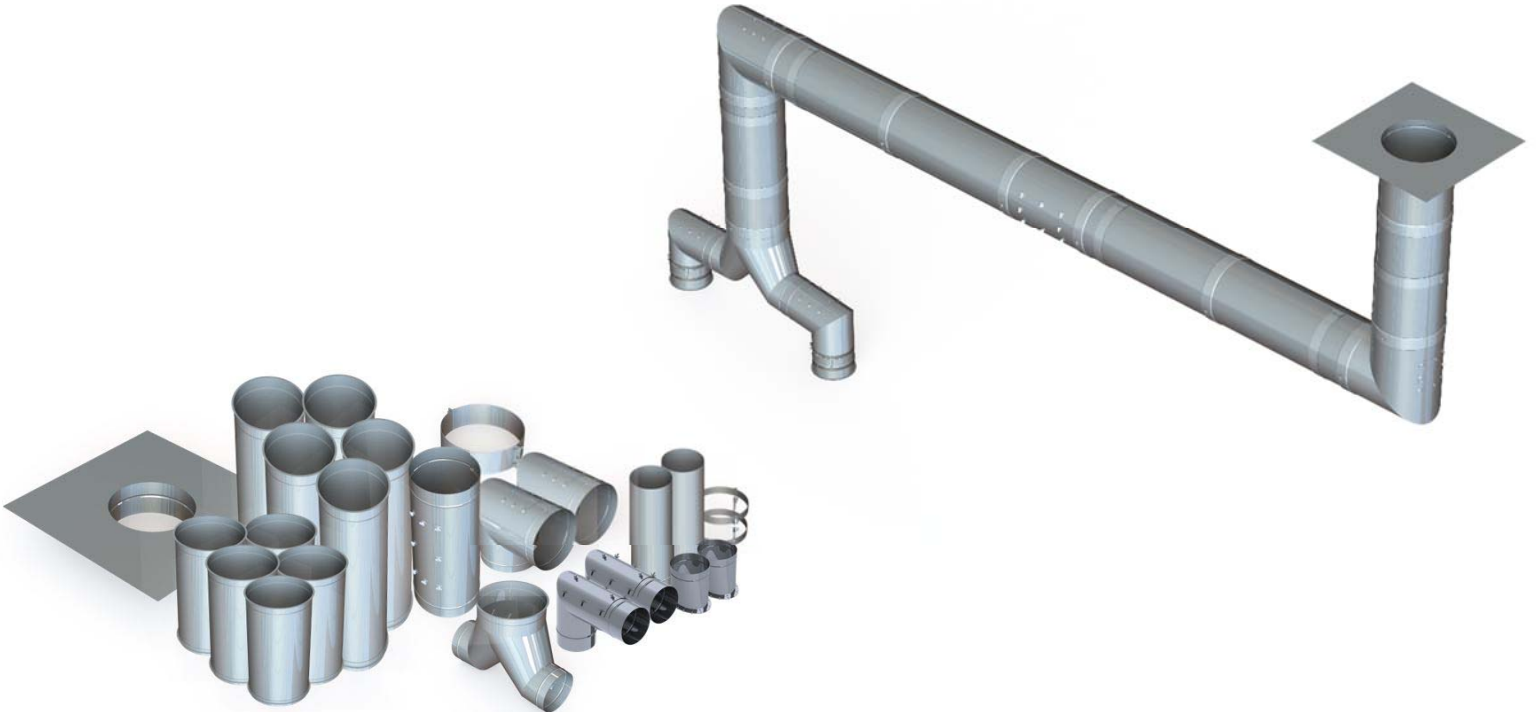


## Grease Duct Spec

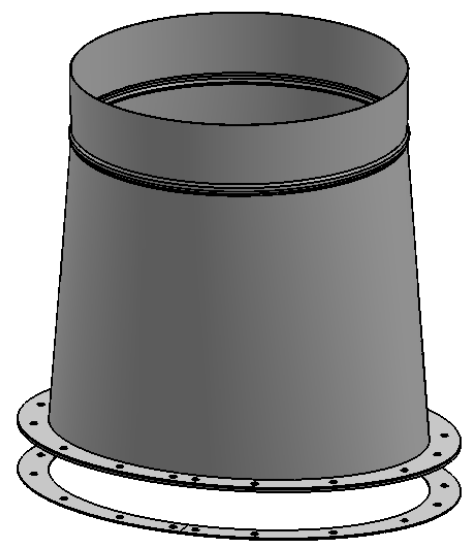
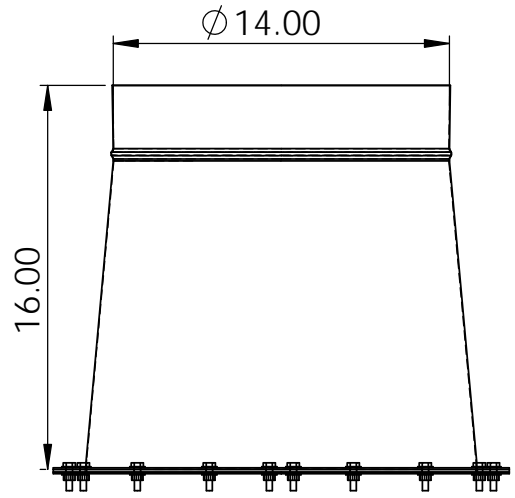
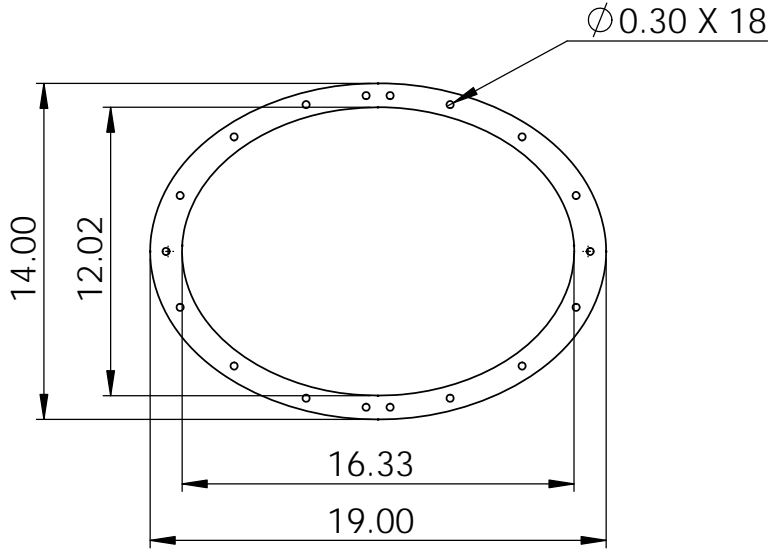
**Model:**

**SW-NAKS-KIT017**



**Single Wall Flanged 20”  
with Two Elbows**

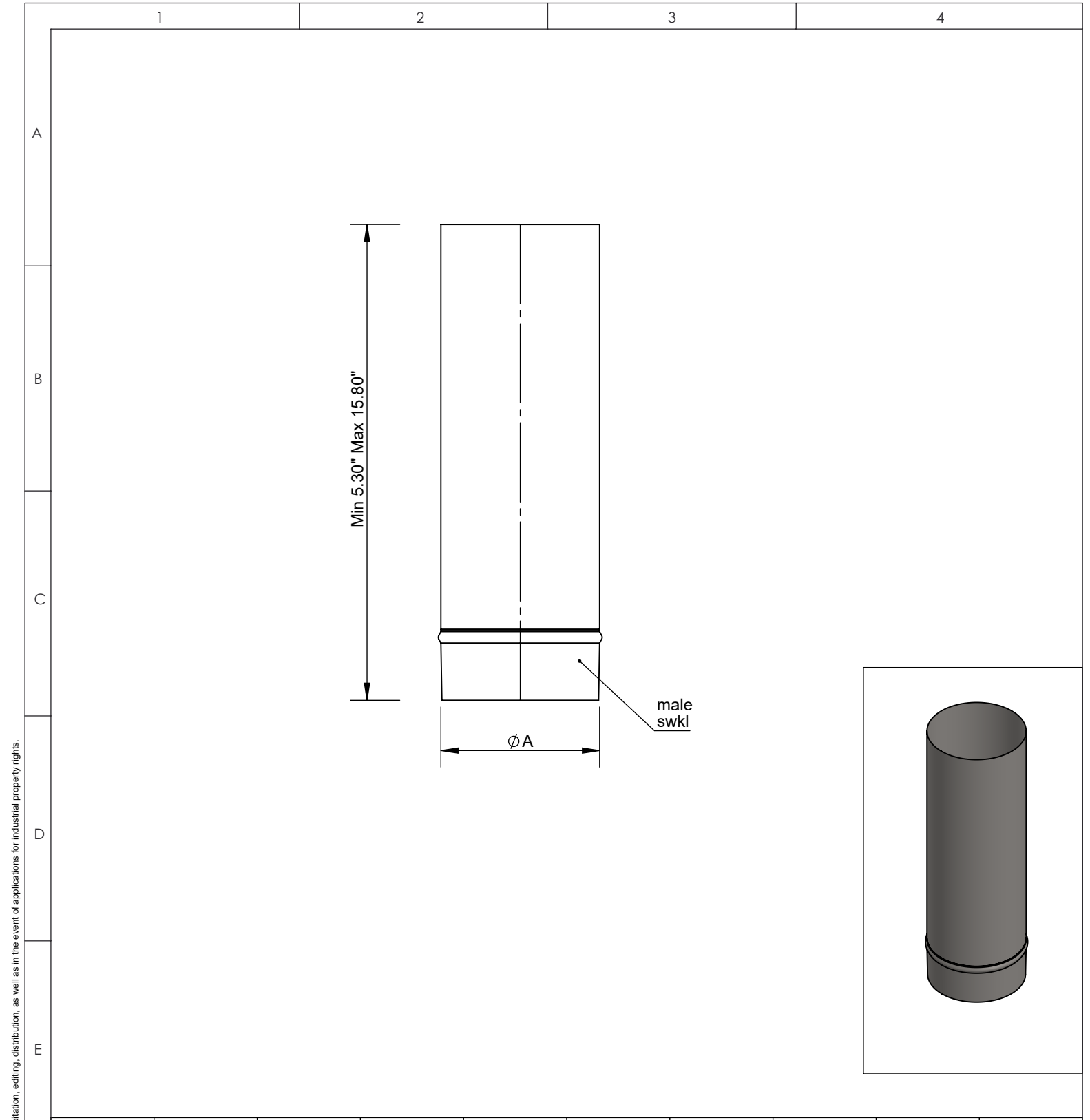




A  
B  
C  
D  
E



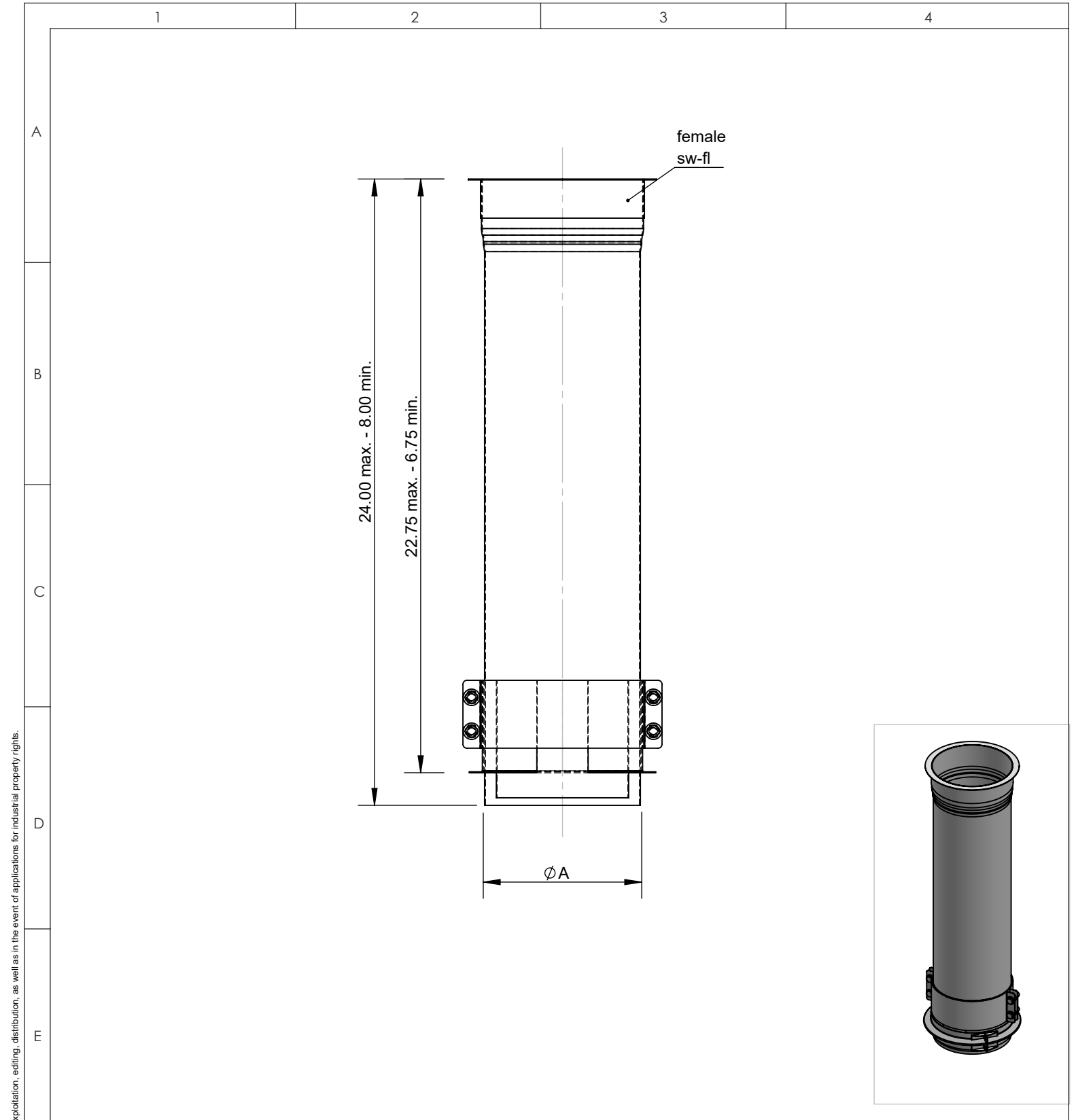
Ø	14	16	18	20	22
A	14	16	18	20	22

material: inside/outside	304	surface: inside/outside	BA	inch / lb			 <b>NORTH AMERICAN KITCHEN SOLUTIONS</b> INCORPORATED	scale
				revisions-no.				format US LETTER
F			date	name	description No-Weld Hood Adapter	code SWNAKS14-NWHA	sheet	
			drawn by					
			checked by					
			approved by					
		modified by			drawing no.			



	<b>Ø</b>	<b>10</b>	<b>11</b>	<b>12</b>	<b>13</b>	<b>14</b>	<b>16</b>	<b>18</b>	<b>20</b>	<b>22</b>		
	<b>A</b>	10	11	12	13	14	16	18	20	22		
F	material: inside/outside	304		surface: inside/outside	BA		inch / lb				 <b>NORTH AMERICAN KITCHEN SOLUTIONS</b> INCORPORATED	scale
				revisions-no.						format		
				date	name		description				US LETTER	
				drawn by							sheet	
				checked by								
			approved by			code						
			modified by			SWNAKSØ-18CL						
							drawing no.					

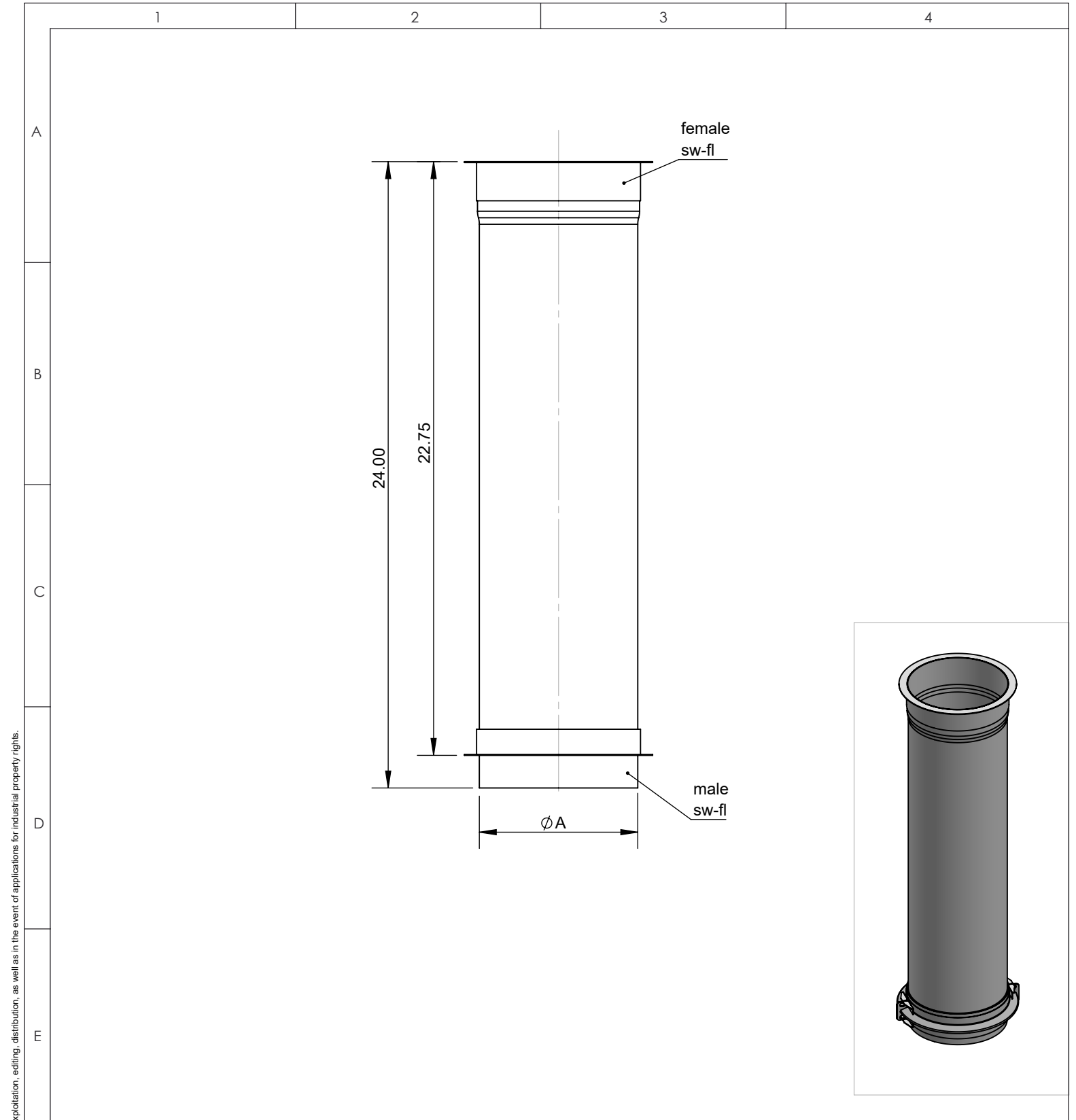
© NAKS Inc. All rights reserved, also regarding any disposal, exploitation, editing, distribution, as well as in the event of applications for industrial property rights.



© NAKS Inc. All rights reserved, also regarding any disposal, exploitation, editing, distribution, as well as in the event of applications for industrial property rights.

$\emptyset$		18		20		22		
A		18		20		22		
material: inside/outside		surface: inside/outside		inch / lb				scale
304		BA		revisions-no.				format
F		date		name		description		US LETTER
		drawn by				24" Adjustable Length		sheet
		checked by						
		approved by						
		modified by				code		
						SWNAKSØ-24AL		
						drawing no.		





© NAKS Inc. All rights reserved, also regarding any disposal, exploitation, editing, distribution, as well as in the event of applications for industrial property rights.

<b>Ø</b>		<b>18</b>		<b>20</b>		<b>22</b>		
<b>A</b>		<b>18</b>		<b>20</b>		<b>22</b>		
material: inside/outside		surface: inside/outside		inch / lb				scale
304		BA		revisions-no.				format
				description				US LETTER
		date		name		24" Fixed Length		sheet
		drawn by						
		checked by						
		approved by				code		
		modified by				SWNAKSØ-24L		
						drawing no.		



1

2

3

4

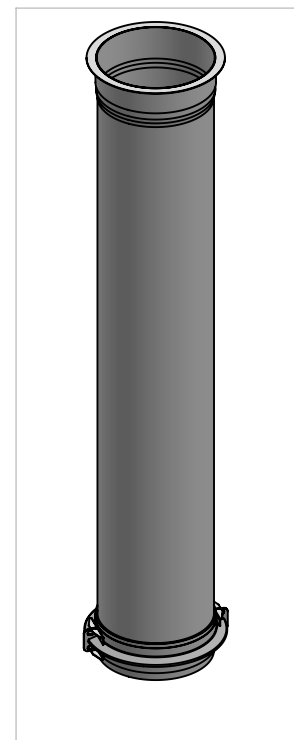
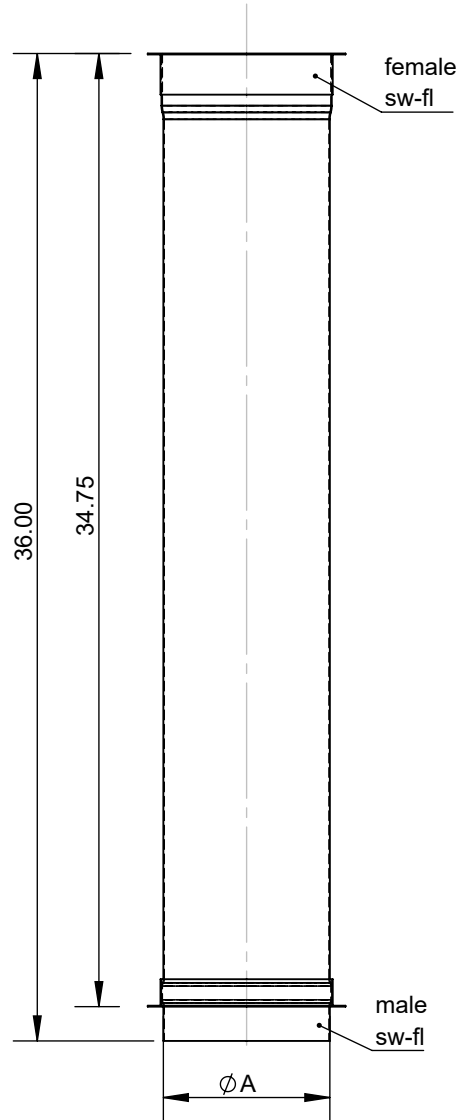
A

B

C

D

E



Ø

18

20

22

A

18

20

22

material:

304

surface:

BA

inch / lb

revisions-no.



**NORTH AMERICAN  
KITCHEN SOLUTIONS**  
INCORPORATED

scale

F

date

name

description

36" Fixed Length

format

US LETTER

drawn by

checked by

approved by

modified by

code

SWNAKSØ-36L

drawing no.

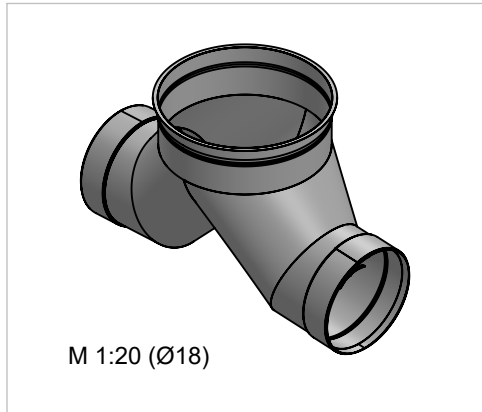
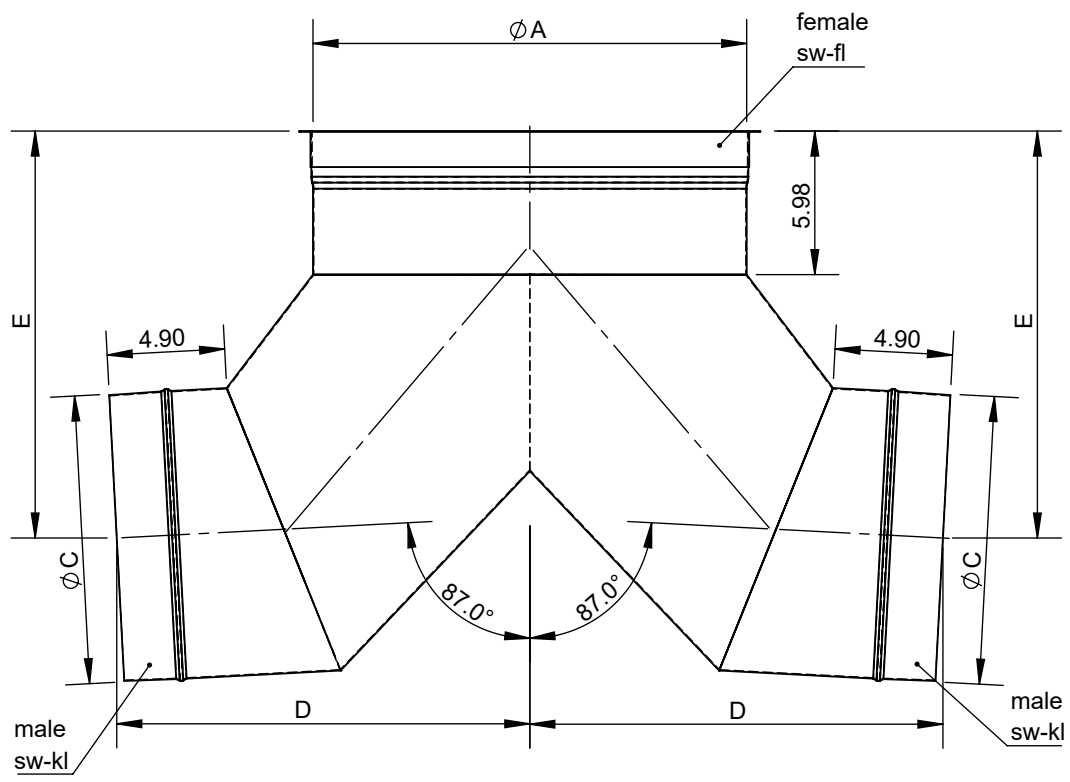
sheet





© NAKS Inc. All rights reserved, also regarding any disposal, exploitation, editing, distribution, as well as in the event of applications for industrial property rights.

1 2 3 4

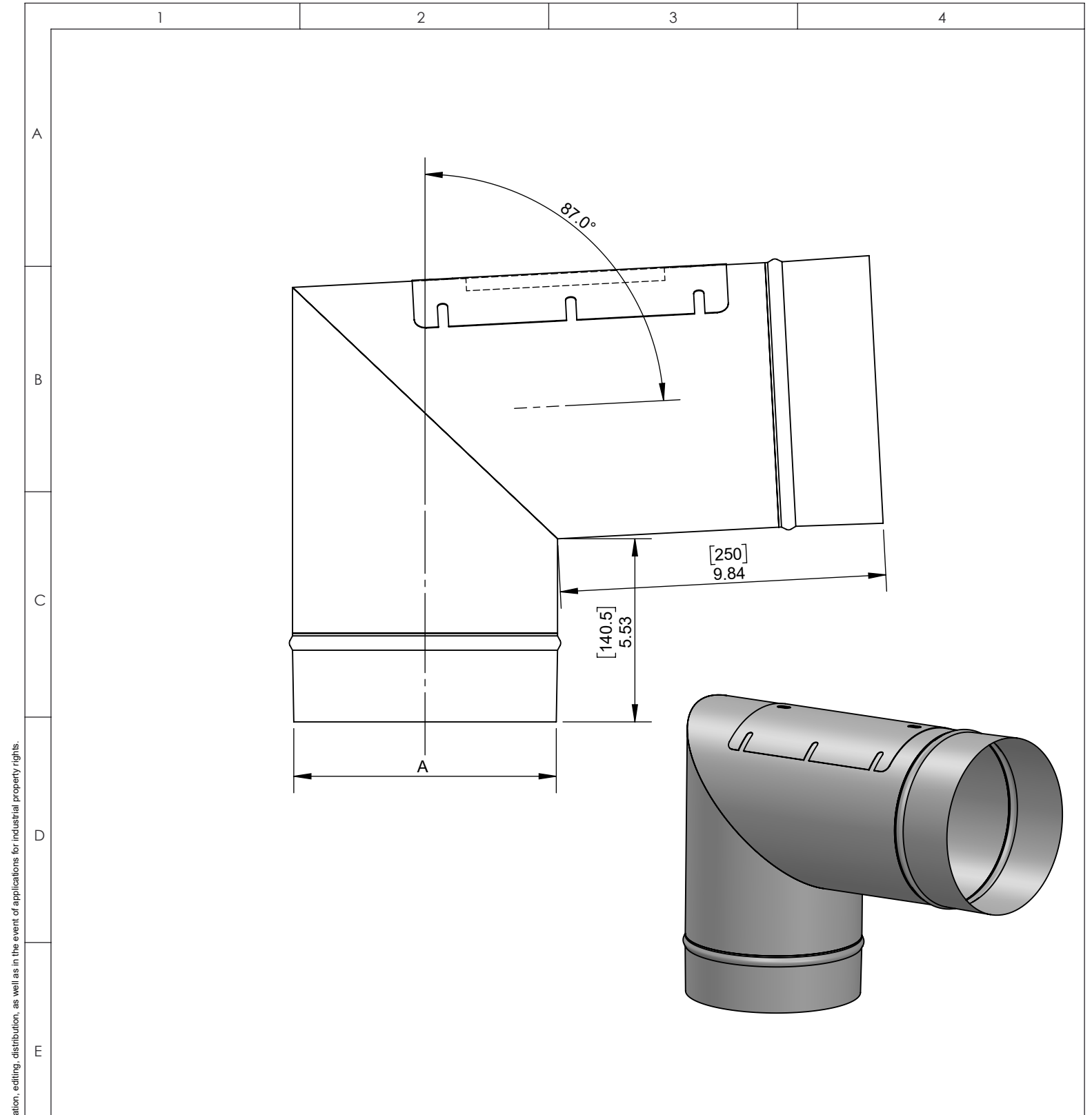
A  
B  
C  
D  
E  
F



<b>Ø</b>	<b>18</b>	<b>20</b>	<b>22</b>
<b>A</b>	18	20	22
<b>C</b>	12	14	16
<b>D</b>	17.21	18.16	19.11
<b>E</b>	16.96	18.02	19.07
<b>lb</b>	20.9	24.62	28.41

material: inside/outside	surface: inside/outside	inch / lb		 <b>NORTH AMERICAN KITCHEN SOLUTIONS INCORPORATED</b>	scale 1:8
		revisions-no.			format US LETTER
UL-no.		date	name	description 87° Bull Head Tee	sheet 1 of 1
		drawn by	12/20/2018		DAR
		checked by			code SWNAKSØ-87BHTØ
		approved by			
modified by	3/18/2019	DAR	drawing no.		

© NAKS Inc. All rights reserved, also regarding any disposal, exploitation, editing, distribution, as well as in the event of applications for industrial property rights.

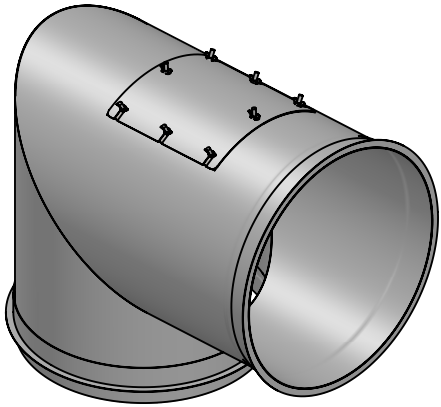
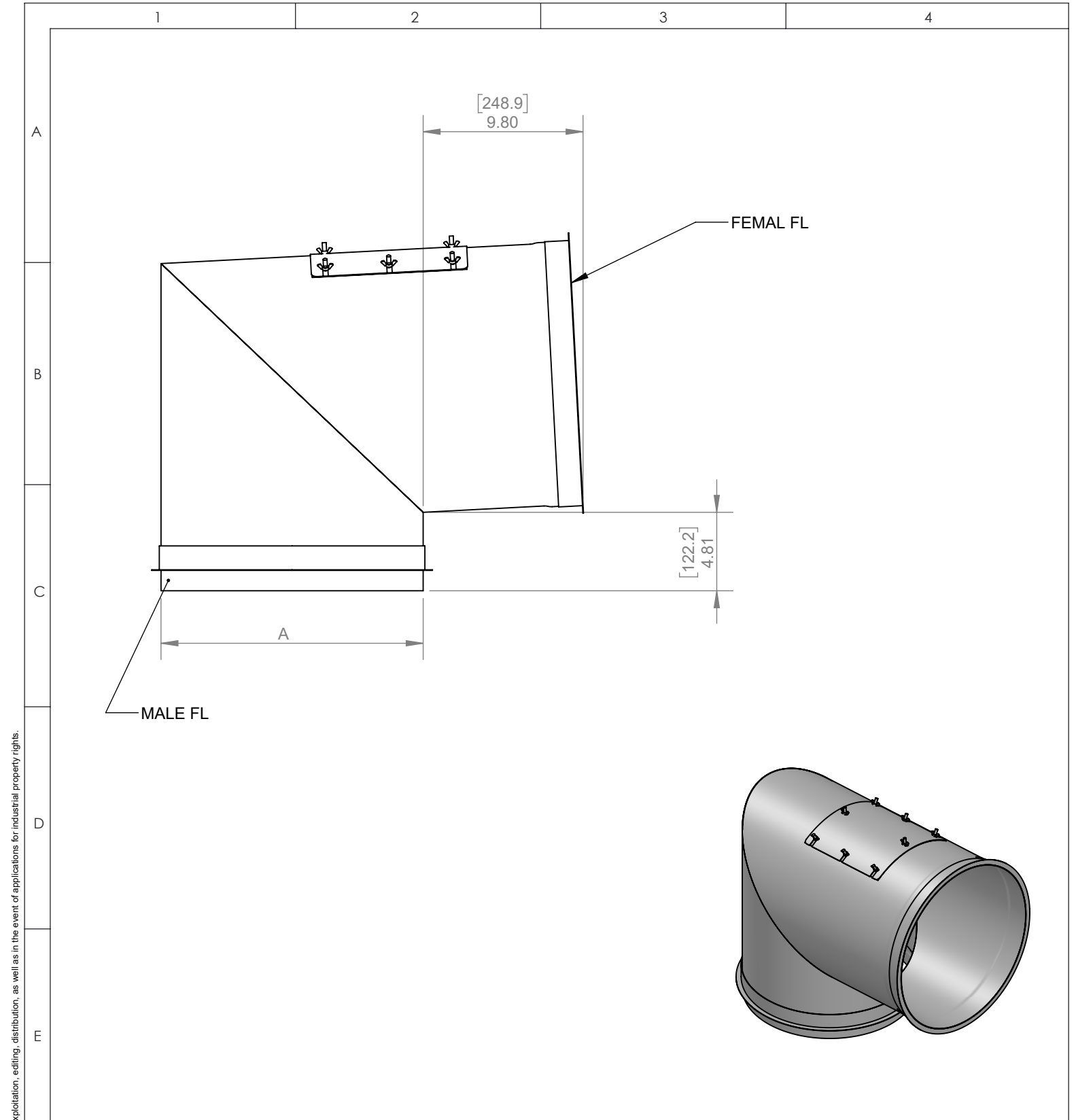


© NAKS Inc. All rights reserved, also regarding any disposal, exploitation, editing, distribution, as well as in the event of applications for industrial property rights.

	<b>Ø</b>	<b>10</b>	<b>11</b>	<b>12</b>	<b>13</b>	<b>14</b>	<b>16</b>	<b>18</b>	<b>20</b>	<b>22</b>	
	<b>A</b>	10	11	12	13	14	16	18	20	22	
F	material: inside/outside	304		surface: inside/outside	BA		inch / lb				scale
						revisions-no.				format US LETTER	
					date	name	description 87 Degree Elbow w/ Access				sheet
				drawn by			code SWNAKSØ-87EA				
				checked by			drawing no.				
			approved by								
			modified by								

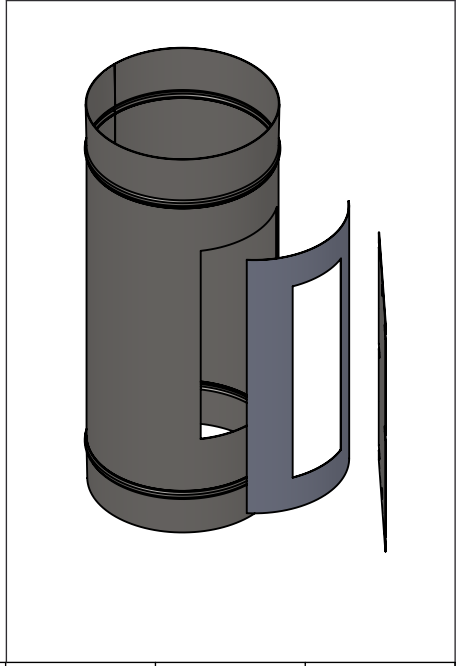
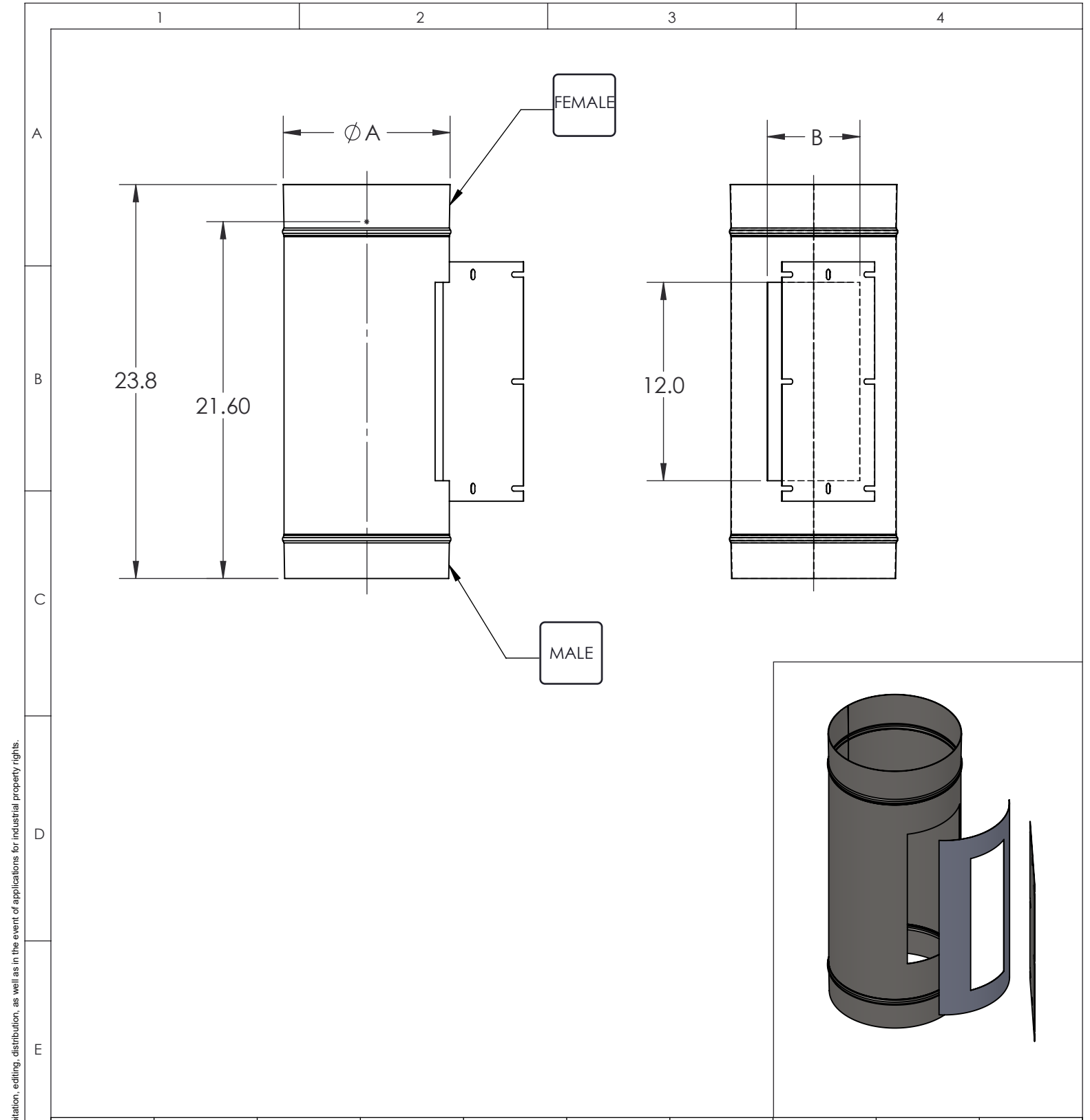








© NAKS Inc. All rights reserved, also regarding any disposal, exploitation, editing, distribution, as well as in the event of applications for industrial property rights.

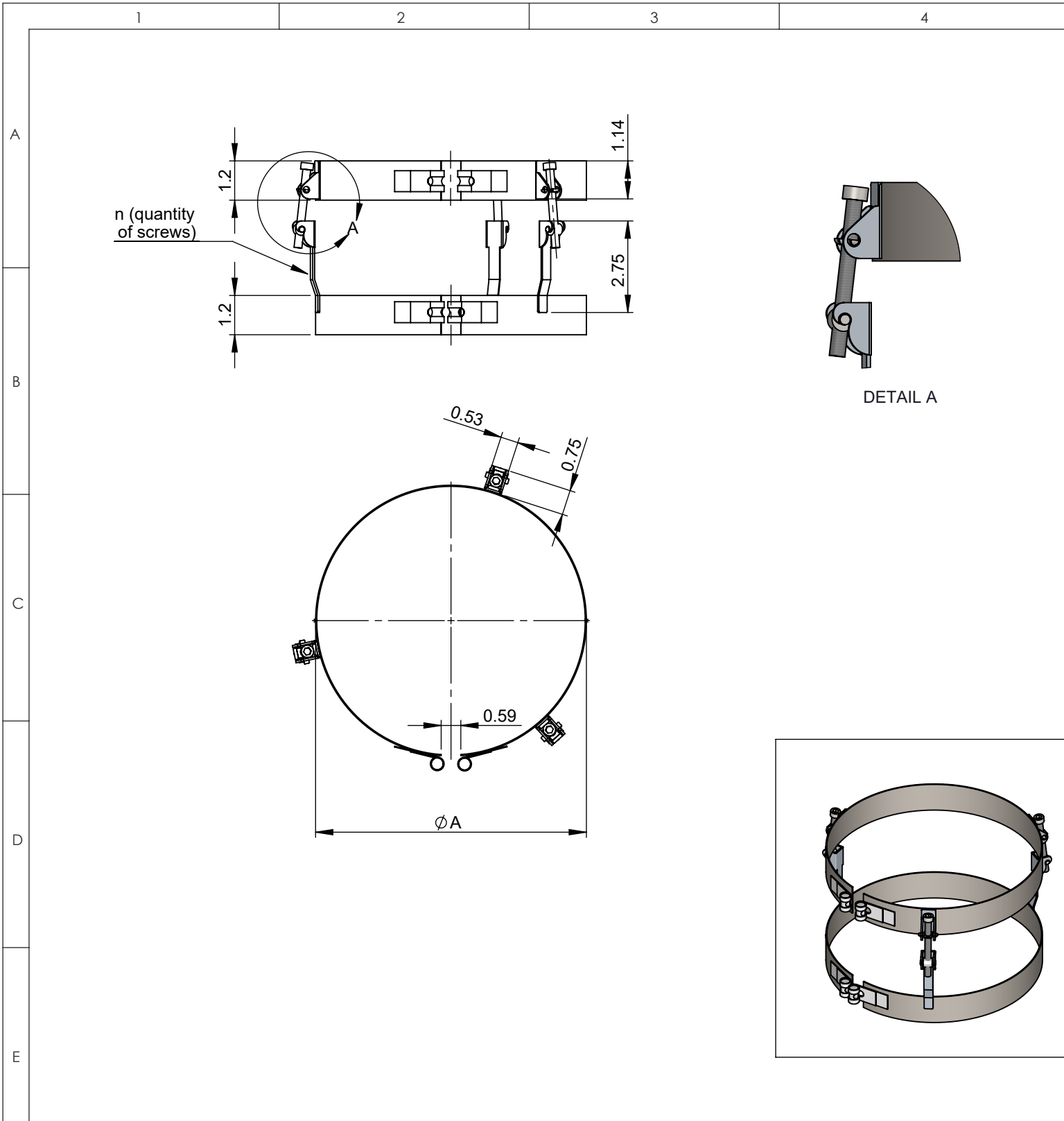
Ø		18		20		22	
A		18		20		22	
material: inside/outside		surface: inside/outside		inch / lb		scale	
304		BA		revisions-no.		NORTH AMERICAN KITCHEN SOLUTIONS INCORPORATED	
		date		name		description 87 Degree Elbow w/ Access	
		drawn by				format US LETTER	
		checked by				sheet	
		approved by				code SWNAKSØ-87EA	
		modified by				drawing no.	





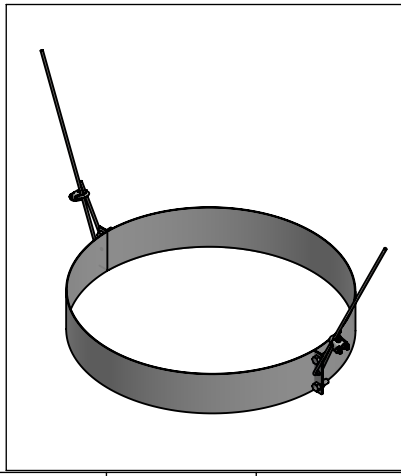
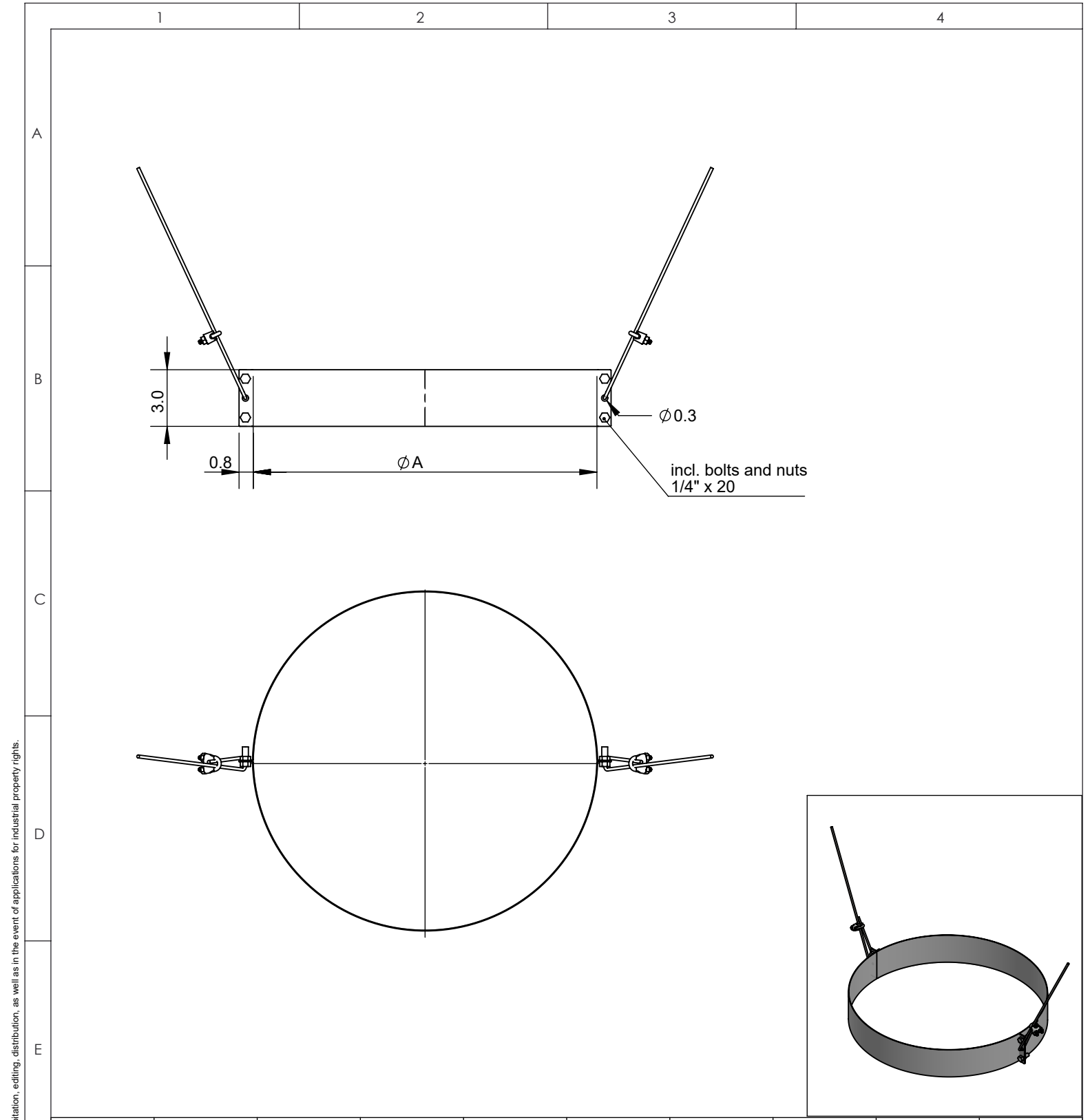
© NAKS Inc. All rights reserved, also regarding any disposal, exploitation, editing, distribution, as well as in the event of applications for industrial property rights.

$\phi$	10	11	12	13	14	16	18	20	22				
A	10	11	12	13	14	16	18	20	22				
material: inside/outside	304		surface: inside/outside	BA		inch / lb				scale			
				revisions-no.				 <b>NORTH AMERICAN KITCHEN SOLUTIONS</b> INCORPORATED	format				
				date	name	description				US LETTER			
				drawn by		code				sheet			
				checked by						SWNAKSØ-IAD			
				approved by									
				modified by									


© NAKS Inc. All rights reserved, also regarding any disposal, exploitation, editing, distribution, as well as in the event of applications for industrial property rights.



$\emptyset$	10	11	12	13	14	16	18	20	22		
A	10	11	12	13	14	16	18	20	22		
material: inside/outside	304		surface: inside/outside	BA		inch / lb				 <b>NORTH AMERICAN KITCHEN SOLUTIONS</b> INCORPORATED	scale
				revisions-no.		A					format
F				date	name	description				US LETTER	
				drawn by		KL Clamp				sheet	
				checked by							
				approved by							
			modified by			code	SWNAKSØ-KLC				
						drawing no.					

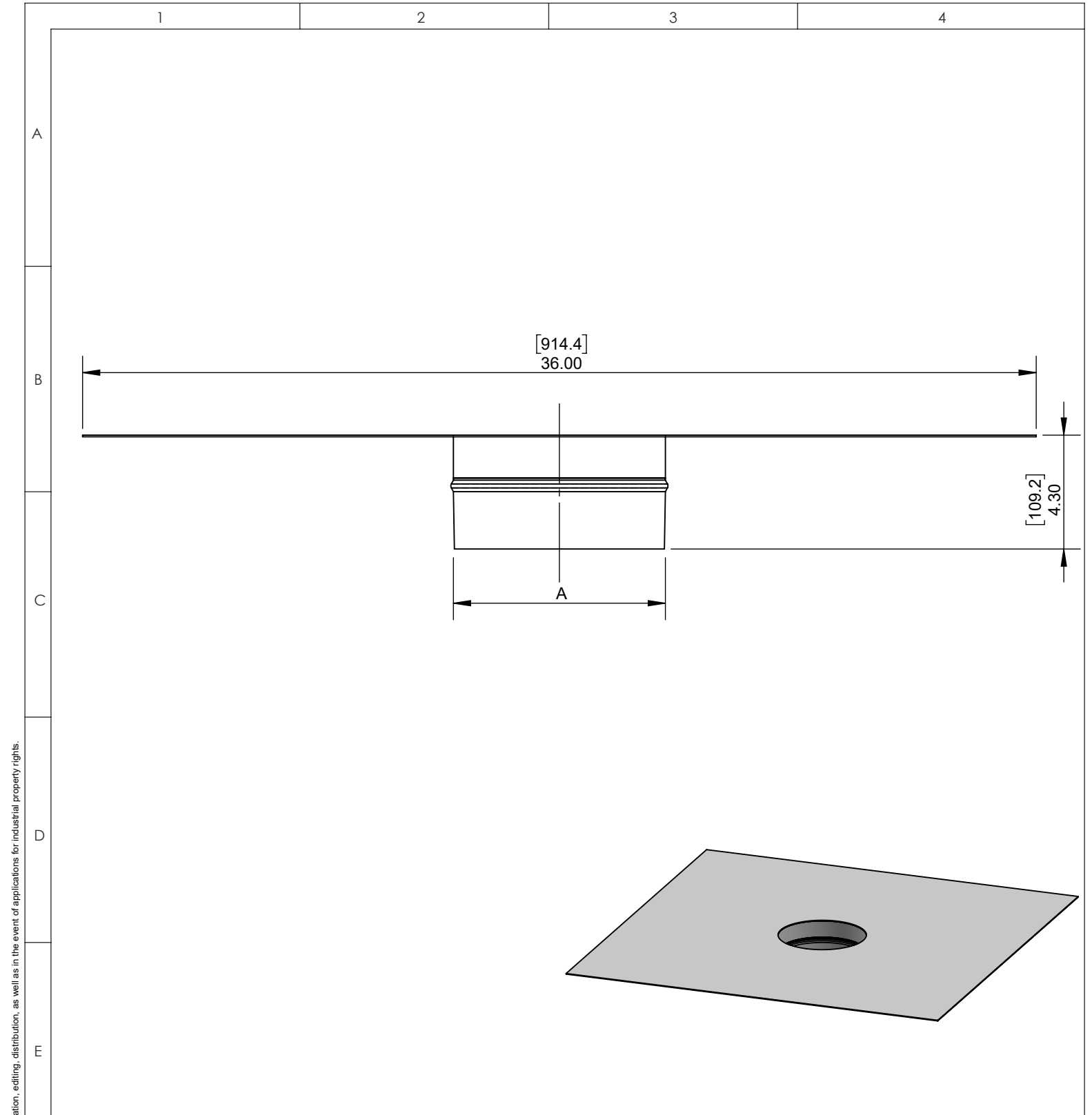


Ø	10	11	12	13	14	16	18	20	22
A	10	11	12	13	14	16	18	20	22


F	material: inside/outside	304	surface: inside/outside	BA	inch / lb		 <b>NORTH AMERICAN KITCHEN SOLUTIONS</b> INCORPORATED	scale
			revisions-no.		A			format
			date	name	description			US LETTER
			drawn by					sheet
			checked by					
		approved by				code		
		modified by				SWNAKSØ-LSB		
						drawing no.		



© NAKS Inc. All rights reserved, also regarding any disposal, exploitation, editing, distribution, as well as in the event of applications for industrial property rights.



© NAKS Inc. All rights reserved, also regarding any disposal, exploitation, editing, distribution, as well as in the event of applications for industrial property rights.

	<b>Ø</b>	<b>10</b>	<b>11</b>	<b>12</b>	<b>13</b>	<b>14</b>	<b>16</b>	<b>18</b>	<b>20</b>	<b>22</b>	
	<b>A</b>	10	11	12	13	14	16	18	20	22	
F	material: inside/outside	304		surface: inside/outside	BA		inch / lb				scale
					revisions-no.				 <b>NORTH AMERICAN KITCHEN SOLUTIONS</b> INCORPORATED	format	
					date	name		description		US LETTER	
					drawn by					Fan Plate Adapter - End 36"x36"	sheet
					checked by						code
				approved by			SWNAKSØ-FPE:36x36				
				modified by			drawing no.	