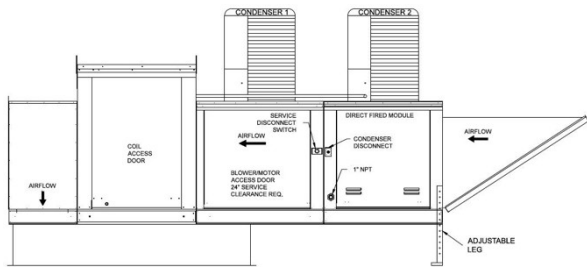


TK Series DX System Quick Start Instructions

TYPICAL PIPING AND WIRING



Notes:

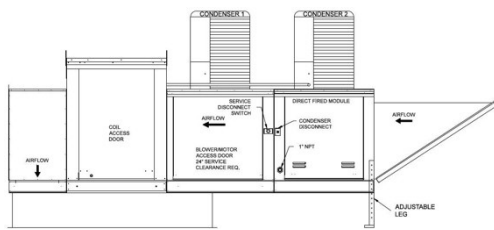
1. Read the equipment's "Installation and Operation Guide" before installing this equipment.
2. All Piping must follow standard refrigerant piping techniques.
3. All wiring must comply with all local and national codes.
4. Call the factory service department with any installation questions.

WARNING

- Installing, start-up, and servicing air-conditioning equipment can be dangerous due to system pressures, electrical components, and equipment locations.
- Only trained, qualified installers and service technicians should install, start-up, and service this equipment.
- Untrained personnel can perform basic maintenance functions such as cleaning coils. All other operations should be performed by trained service personnel.
- When working on the equipment, observe precautions in the literature and on decals, labels, and tags attached to the equipment.
- Follow all safety codes. Wear safety glasses and work gloves. Keep quenching cloth and fire extinguisher nearby when brazing.
- Use safe lifting practices when lifting and setting equipment.

INSPECT UNIT

- Inspect unit for damage.
- Look for damage done to the casing, coils, or ship loose components.
- Contact factory service department if damage is found on the unit.
- Verify that the power and gas supply to the unit matches the unit nameplate ratings.
- Call the factory service department with any installation questions.



START-UP

Read the condensing unit and TK Series installation, start-up, and operation guides.

TECHNICAL SERVICE



For additional questions or help, contact the service department.
(440)365-4567 or Toll Free at (800)854-3267

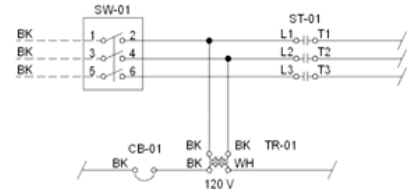
ELECTRICAL CONNECTIONS

TK UNIT POWER SUPPLY

Check that the power supply matches the units nameplate rating.

Wire the disconnect using NEC and local codes. Size the wire according to the units minimum circuit amps.

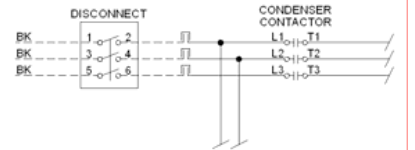
- SW-01: MAIN DISCONNECT SWITCH
- ST-01: SUPPLY MOTOR CONTACTOR
- CB-01: CIRCUIT BREAKER
- TR-01: POWER TRANSFORMER



CONDENSER POWER SUPPLY

Check that the power supply matches the units nameplate rating.

Wire the disconnect using NEC and local codes. Size the wire according to the units minimum circuit amps.

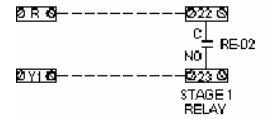


CONDENSER SINGLE COMPRESSOR (A)

Option A

Wire single compressor condensers with R-G- Y-W-C terminals to the AMU as shown.

Refer to the condensers installation manual for additional wiring directions.

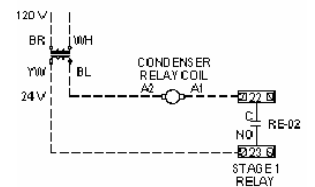


CONDENSER SINGLE COMPRESSOR (B)

Option B

Wire single compressor condensers without R- G-Y-W-C terminals to the AMU as shown.

Refer to the condensers installation manual for additional wiring directions.

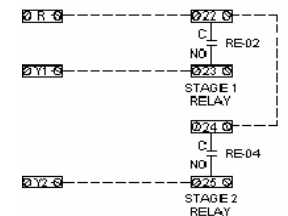


CONDENSER DUAL COMPRESSOR (A)

Option A

Wire dual compressor condensers with R-G-Y- W-C terminals to the AMU as shown.

Refer to the condensers installation manual for additional wiring directions.



CONDENSER DUAL COMPRESSOR (B)

Option B

Wire dual compressor condensers without R- G-Y-W-C terminals to the AMU as shown.

Refer to the condensers installation manual for additional wiring directions.

