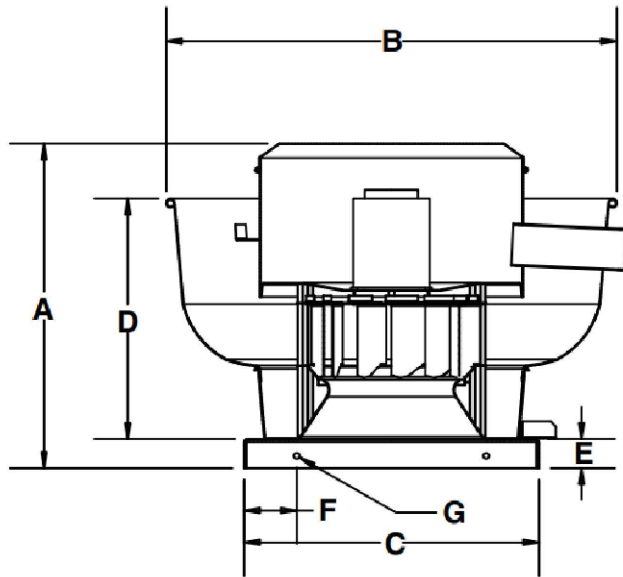


MODEL# **EC36**

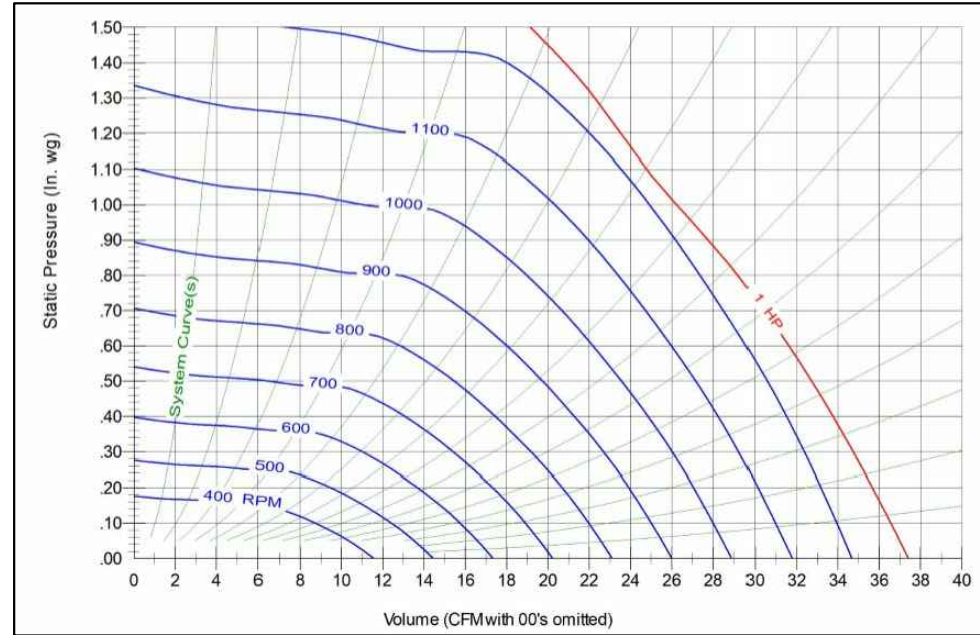
**UL762 UPBLAST EXHAUST FAN  
DIRECT DRIVE**



**DIMENSIONAL DATA**  
26-1/2" SQ. CURB

MODEL #	A	B	C	D	E	F	G
EC36	31 3/4"	37 1/2"	28"	21 1/8"	2"	4"	7/16"

**PERFORMANCE DATA**



<b>PHASE</b>	1	<b>VOLTS</b>	115
<b>AMPS</b>	9.8	<b>HP</b>	1

RPM	.000" S.P.	.250" S.P.	.50" S.P.	.75" S.P.	1.00" S.P.	1.25" S.P.
	CFM	CFM	CFM	CFM	CFM	CFM
1200	3400	3200	3000	2700	2400	2025

**STANDARD FEATURES**

EFFICIENT EC MOTOR WHICH CAN RUN DOWN TO 10% OF SPEED  
HEAVY GAUGE ALUMINUM HOUSING  
1 YEAR LIMITED WARRANTY ON ALL ELECTRIC MOTORS  
FACTORY SET DRIVE  
DIRECT DRIVEN MOTORS ARE ENCLOSED IN WEATHER-TIGHT COMPARTMENTS  
AVERAGE UNIT WEIGHT: 116 LBS  
AVERAGE SHIPPING WEIGHT: 155 LBS



FANS  
**UL 762**