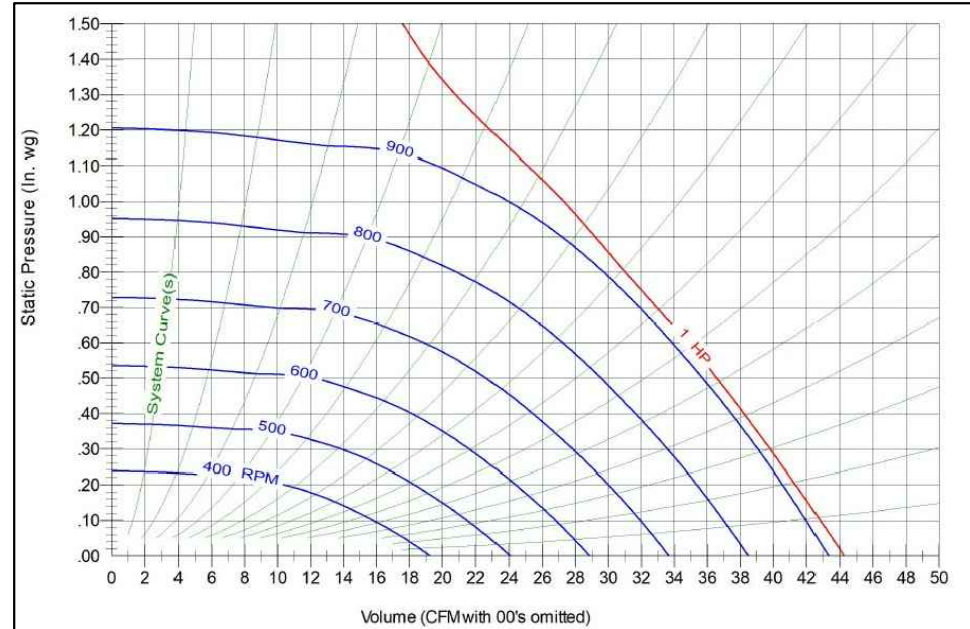
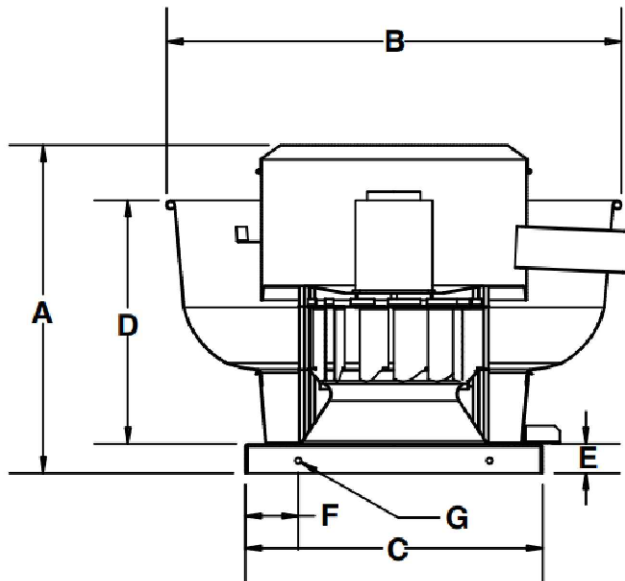


MODEL# **EC48**

UL762 UPBLAST EXHAUST FAN DIRECT DRIVE

PERFORMANCE DATA



| | | | |
|--------------|-----|--------------|-----|
| PHASE | 1 | VOLTS | 115 |
| AMPS | 9.8 | HP | 1 |

| RPM | .000" S.P. | .250" S.P. | .50" S.P. | .75" S.P. | 1.00" S.P. | 1.25" S.P. |
|------------|------------|------------|-----------|-----------|------------|------------|
| | CFM | CFM | CFM | CFM | CFM | CFM |
| 900 | 4300 | 4000 | 3725 | 3400 | 2900 | 2200 |

DIMENSIONAL DATA 31-1/2" SQ. CURB

| MODEL # | A | B | C | D | E | F | G |
|---------|---------|---------|---------|---------|--------|----|-------|
| EC48 | 36 1/2" | 43 3/4" | 33 1/8" | 25 1/2" | 2 1/2" | 4" | 7/16" |

STANDARD FEATURES

- EFFICIENT EC MOTOR WHICH CAN RUN DOWN TO 10% OF SPEED
- HEAVY GAUGE ALUMINUM HOUSING
- 1 YEAR LIMITED WARRANTY ON ALL ELECTRIC MOTORS
- FACTORY SET DRIVE

DIRECT DRIVEN MOTORS ARE ENCLOSED IN WEATHER-TIGHT COMPARTMENTS
AVERAGE UNIT WEIGHT: 178 LBS
AVERAGE SHIPPING WEIGHT: 205 LBS



FANS
UL 762