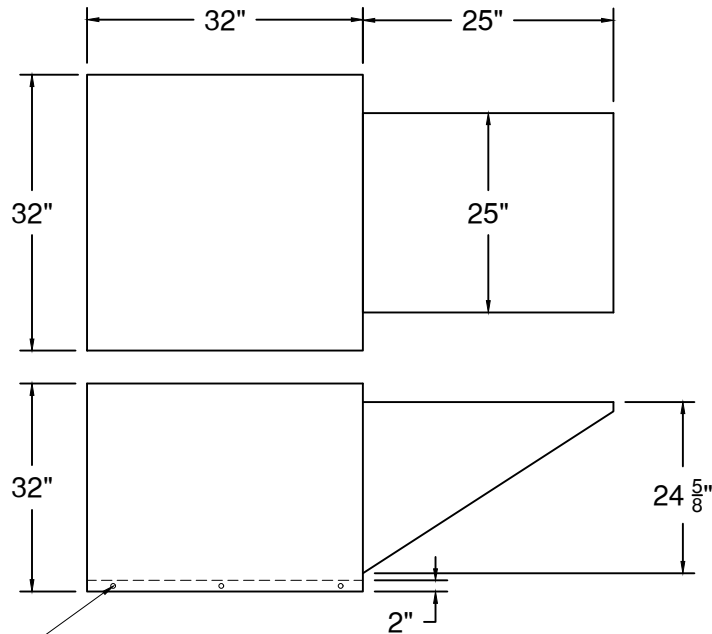
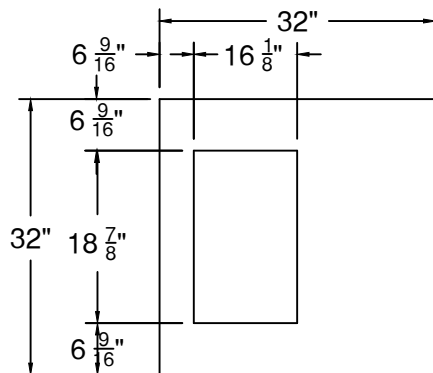


# MODEL # SF11 UL705 FRESH AIR SUPPLY FAN BELT

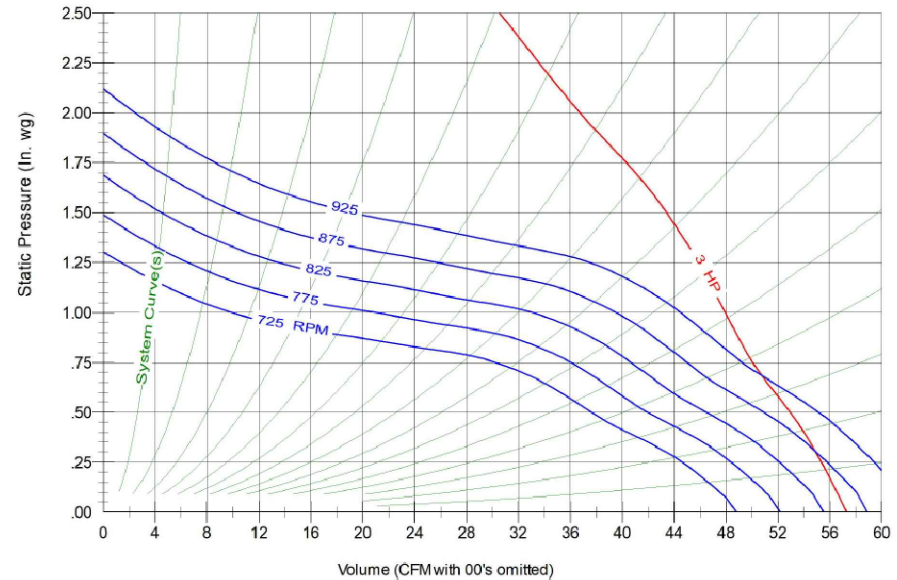


**DIMENSIONAL DATA**  
31 1/2" SQ. CURB



**BOTTOM VIEW**

## PERFORMANCE DATA



<b>PHASE</b>	1	<b>VOLTS</b>	208-230/460
<b>AMPS</b>	18.7-17/9.3	<b>HP</b>	3

RPM	0"		.125"		.250"		.375"		.5"		.750"		1"	
	CFM	SONE	CFM	SONE	CFM	SONE	CFM	SONE	CFM	SONE	CFM	SONE	CFM	SONE
730	4941	22	4739	0.125	4492	19.4	4171	18.4	3802	17.3	3060	15.3	1070	14
826	5600	26	5425	25	5207	0.26	4980	23	4655	22	4094	20	3327	18.4

### STANDARD FEATURES

- FLEXIBLE FORWARD CURVED BELT DRIVE BLOWERS
- OPERATE AT LOW SPEED AND LOW NOISE LEVELS
- GALVANIZED STEEL HOUSING
- HEAVY DUTY BALL BEARINGS SUITABLE FOR -65° TO +250° F
- WEATHER PROOF CABINET DESIGNED FOR OUTDOOR ROOF MOUNTING
- FILTERS DESIGNED WITH LARGE SURFACE AREA FOR EFFICIENT FILTRATION
- WASHABLE ALUMINUM MESH FILTER ARE LOCATED IN THE INTAKE HOOD AND ARE ACCESSIBLE THROUGH THE HOOD END CAP FOR EASE OF SERVICE
- EASY ON-SITE ADDITION OF CUSTOMER SUPPLIED AIR SUPPLY DUCT EXTENSION BETWEEN THE INTAKE HOOD AND UNIT PROVIDES ADDITIONAL SEPARATION WHERE NECESSARY
- AVERAGE UNIT WEIGHT: 180 LBS
- AVERAGE SHIPPING WEIGHT: 240 LBS

